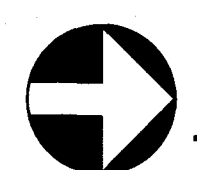
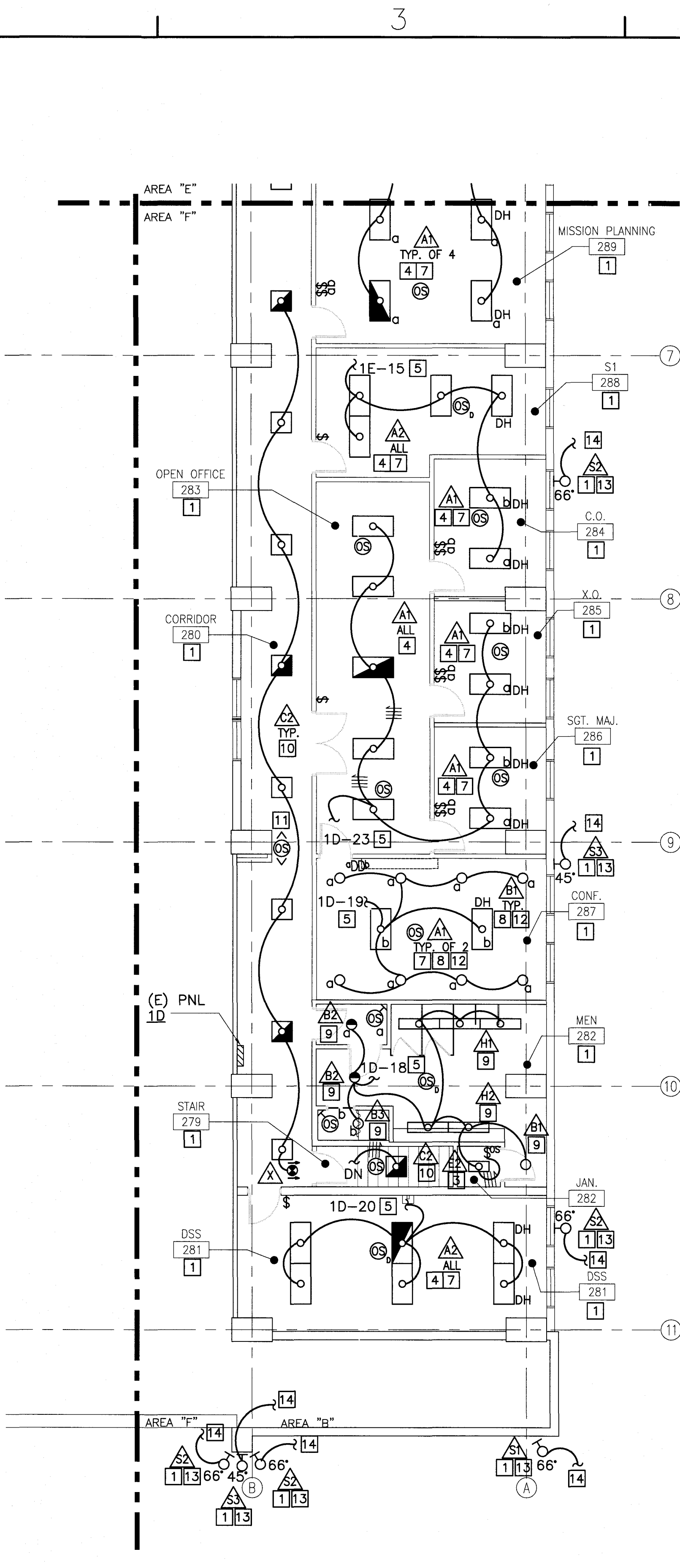


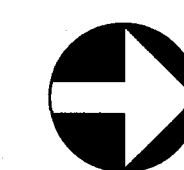
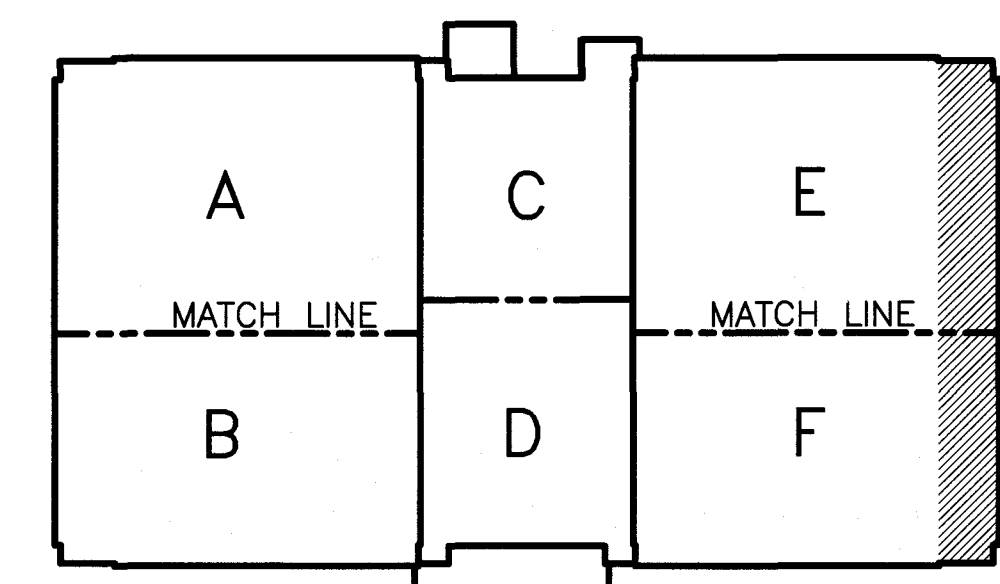
SECOND FLOOR LIGHTING PLAN - AREA E
SCALE: 1/8" = 1'-0"



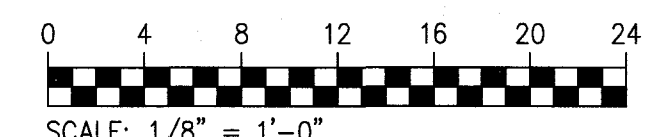
SECOND FLOOR LIGHTING PLAN - AREA F
SCALE: 1/8" = 1'-0"

NEW WORK NOTES:

- 1 PROVIDE A DIGITALLY CONTROLLED INTELLIGENT ROOM-BASED LIGHTING CONTROL SYSTEM COMPLETE WITH POWERPACKS AND/OR ENHANCED LED DRIVER TECHNOLOGY TO PERFORM THE IDENTIFIED FUNCTIONS. PROVIDE CAT 5E CABLE AS NECESSARY TO ENABLE OPERATION OF SYSTEM.
- 2 CEILING OR CORNER/WALL MOUNTED AUTOMATIC OCCUPANCY SENSOR ON-OFF VACANCY CONTROL SWITCH(ES) WITH 15 MINUTE MOTION SENSING CYCLE.
- 3 WALL SWITCHBOX MOUNTED AUTOMATIC OCCUPANCY SENSOR ON-OFF VACANCY CONTROL SWITCH(ES) WITH 15 MINUTE MOTION SENSING CYCLE.
- 4 CEILING OR CORNER WALL MOUNTED AUTOMATIC OCCUPANCY SENSOR ON-OFF VACANCY BI-LEVEL/OFF CONTROL SWITCH(ES) WITH 15 MINUTE MOTION SENSING CYCLE. BI-LEVEL CONTROLS SHALL MANUALLY SET THE ILLUMINATION OF ALL LUMINAIRES TO 100% AND 35% OF MAXIMUM LIGHTING OUTPUT OR OFF WHILE THE ROOM IS UNOCCUPIED.
- 5 CONNECT ROOM/AREA LIGHTING TO (E) (UNSWITCHED) CIRCUIT. CIRCUIT INDICATED IS FROM RECORD DRAWINGS. CONTRACTOR SHALL VERIFY.
- 6 NOT USED.
- 7 IN ADDITION TO OTHER CONTROLS/FUNCTIONS INDICATED A "DH" NEAR A LUMINAIRES INDICATES AUTOMATIC DAYLIGHT HARVESTING FUNCTION TO DIM LUMINAIRES DOWN TO 20% MINIMUM BASED UPON THE AMOUNT OF DAYLIGHT FROM THE ADJACENT WINDOW(S). PROVIDE LIGHT LEVEL SENSOR NEAR FIXTURE TO MAINTAIN A MINIMUM OF 50 FOOTCANDLES AVERAGE MAINTAINED AT 30" AFF BELOW LUMINAIRE(S). THE LUMINAIRES SHALL DELIVER 100% LIGHT OUTPUT WHEN NO DAYLIGHT IS DETECTED AND REDUCE THE ILLUMINATION LEVEL TO COMPENSATE FOR DAYLIGHT DOWN TO A MAXIMUM OF 20%. MANUAL OVERRIDE OF AUTOMATIC DAYLIGHT COMPENSATING CIRCUITRY SHALL BE ALLOWED, BUT WILL BE RESET UPON ROOM/AREA BEING DEEMED UNOCCUPIED BY SENSOR(S).
- 8 PROVIDE 0-10V DIMMING DRIVER SUITABLE FOR DIMMING DOWN TO 5% OUTPUT.
- 9 CEILING OR CORNER WALL MOUNTED AUTOMATIC OCCUPANCY SENSOR ON-OFF CONTROL SWITCH WITH 15 MINUTE MOTION SENSING CYCLE AND NO OVERRIDE MANUAL SWITCH.
- 10 PROVIDE CORRIDOR OR STAIR CEILING MOUNTED OCCUPANCY SENSOR CONTROL. PROVIDE DIMMING DRIVERS TO AUTOMATICALLY DIM ALL LUMINAIRES TO 20% LIGHT OUTPUT UPON NO DETECTION OF OCCUPANCY FOR 15 MINUTES BETWEEN 0500 AND 1900 WITH 10 SECOND FADE RATE DOWN AND A 2 SECOND FADE RATE UP. TURN LUMINAIRES OFF INSTANTLY UPON NO DETECTION OF OCCUPANCY FOR 15 MINUTES BETWEEN 1900 AND 0500 AND ON AGAIN INSTANTLY UPON DETECTION OF OCCUPANCY.
- 11 BI-DIRECTIONAL NARROW COVERAGE SENSOR SUITABLE FOR HALLWAY APPLICATIONS.
- 12 CEILING OR CORNER WALL/MOUNTED AUTOMATIC OCCUPANCY SENSOR ON-OFF VACANCY CONTROL SLIDE DIMMER SWITCH(ES) WITH 15 MINUTE MOTION SENSING CYCLE.
- 13 PROVIDE NEW MOUNTING HARDWARE @ THE SAME MOUNTING HEIGHT AND IN THE GENERAL DIRECTION OF FLOODLIGHT AS PART OF DEMOLITION. PROVIDE TOP AND SIDE GLARE SHIELD/VISOR AND TILT LUMINAIRE AS INDICATED. PROVIDE AUTOMATIC BI-LEVEL CONTROLS. VERIFY PROGRAM OPERATION W/CONTRACTING OFFICER.
- 14 CONNECT TO EXISTING CIRCUIT.



KEY PLAN
SCALE: NTS



DESIGNED & ENGINEERED BY:	DATE:	APPROVED:
 DIGITAL JIG ENGINEERS ARCHITECTS PLANNERS 441 N. HARRIS CIRCLE WILMINGTON, DE 19801 (302) 441-1111 www.djgin.com	7/20/16 DAVID E. LAKE Lic. No. 037920 PROFESSIONAL ENGINEER	DESCRIPTION: NAVFAC DRAWING NO. 12714376 SHEET 232 OF 278 E-108
FOR EFD FOR COMMANDER NAVFAC DATE: JULY 20, 2016 APPROVED:		
ACTIVITY - SATISFACTORY TO DATE: JULY 20, 2016 APPROVED:		
PROJECT MANAGER: _____ FIRE PROTECTION: _____ BRANCH MANAGER: _____ DESIGN DIRECTOR: _____		
DEPARTMENT OF THE NAVY NAVAL FACILITIES ENGINEERING COMMAND MARINE CORPS AIR STATION, CHERRY POINT, N.C. REPAIRS AND IMPROVEMENTS TO HANGAR 250 LIGHTING SECOND FLOOR PLAN - AREA E & F		
CODE ID. NO. 80091 SCALE: AS SHOWN FED. NO. 0000 STA. PROJ. NO. CP1502M/CP1502R SPEC. NO. 00000 CONSTR. CONTR. NO. N40085-10-D-3535 NAVFAC DRAWING NO. 12714376 SHEET 232 OF 278 E-108 DRAWING REVISION JULY 2003	SIZE: D SCALE: 1/8" = 1'-0"	DATE: 7/20/16 APPROVED: